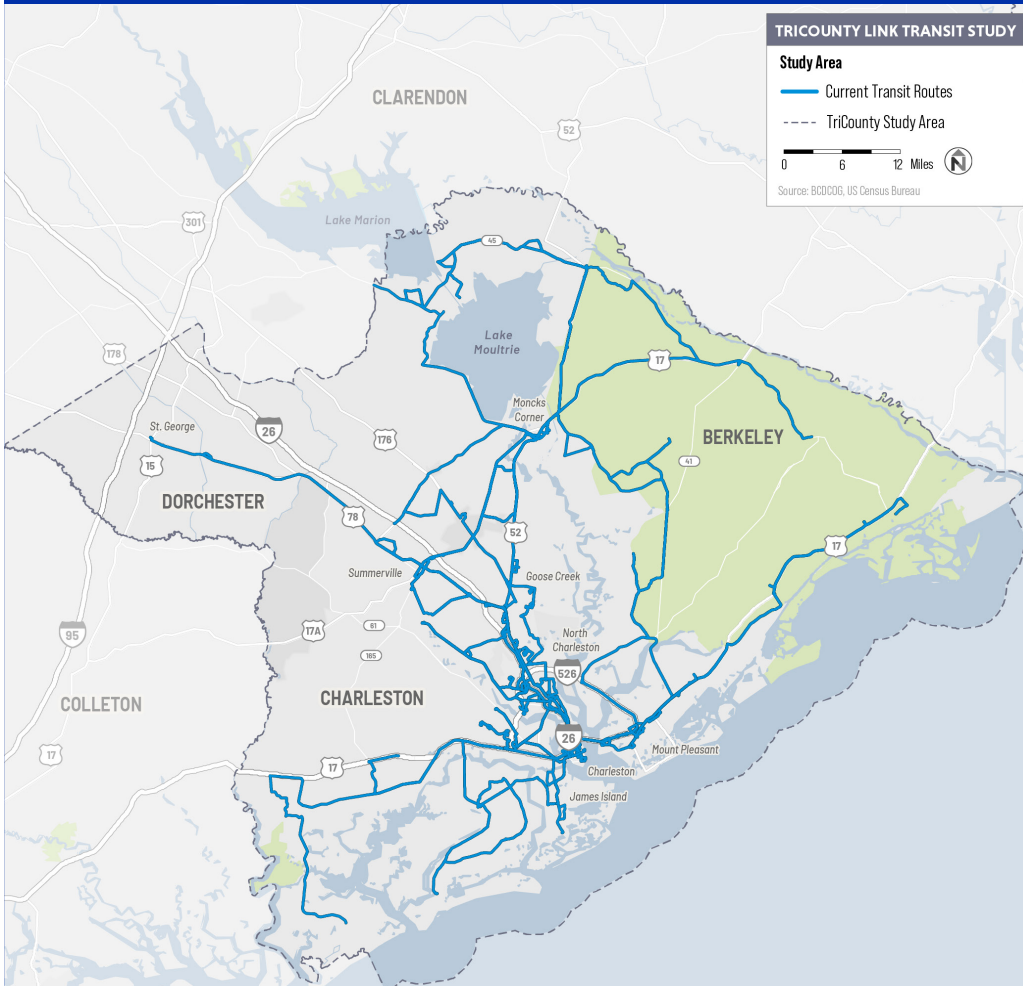


TriCounty Link Transit Study

The TriCounty Link (TCL) transit system provides fixed, commuter, and on-demand transit services to the rural residents of Berkeley, Charleston, and Dorchester counties. TCL is developing a transit study to plan for more efficient, effective, and convenient service for the entire TriCounty Link area, including specific recommendations for the fast-growing Summerville area.

Study Goals

- 1** Connect underserved communities to key job centers and existing and planned transit
- 2** Develop a framework for reliable and efficient, fixed route and on-demand service
- 3** Integrate current and planned transit services in key communities (e.g. Summerville)
- 4** Get community input, especially from riders who rely on transit most



Phase 1 Existing Conditions

Understand current transit use, service gaps, and the improvements desired by the community.



Phase 2 Recommendations

Create recommendations for addressing transit needs and present draft concepts to the community.



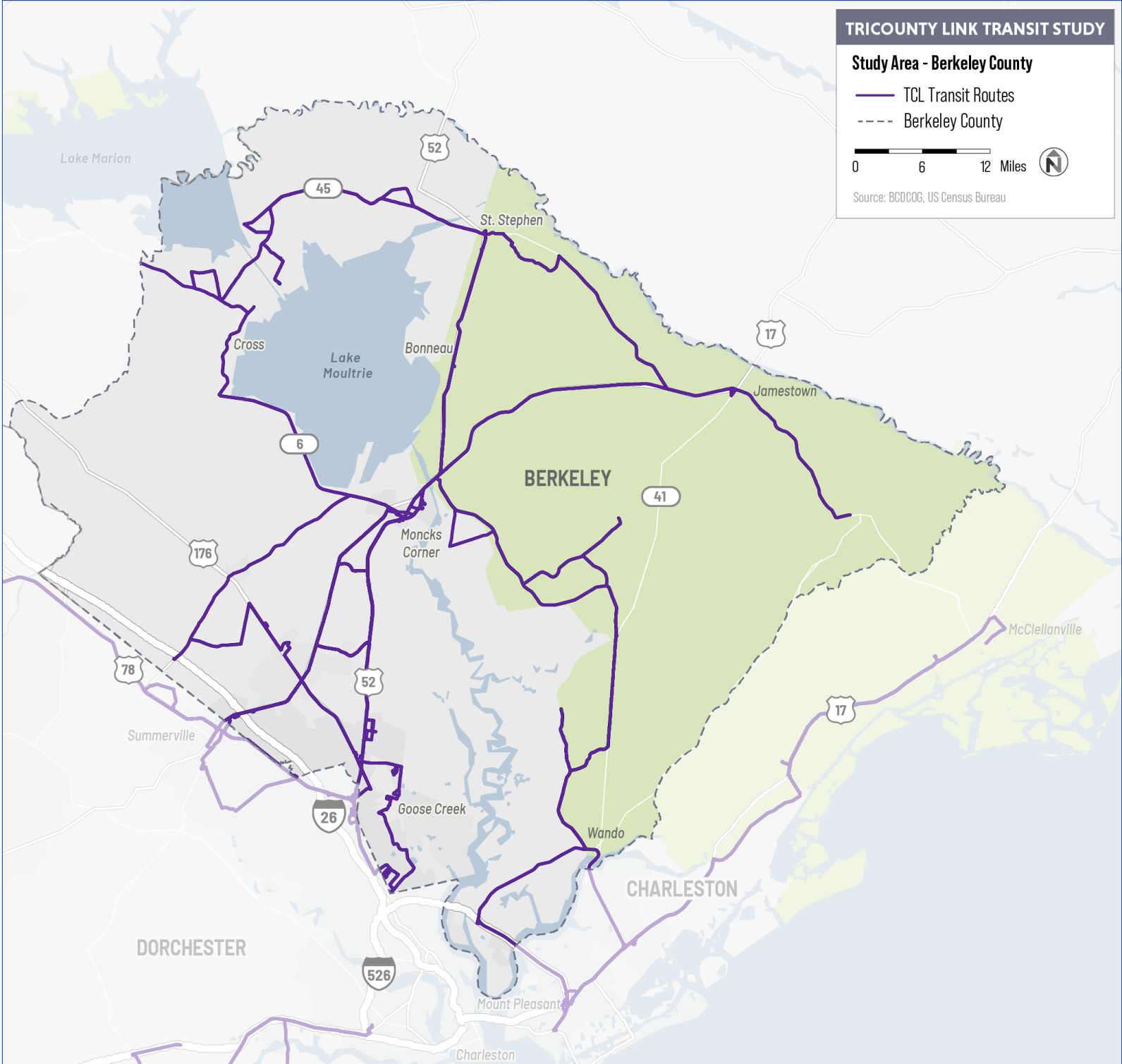
Phase 3 Final Plan

Compile data analysis, community engagement findings, implementation planning, and funding opportunities into a final plan.

TriCounty Link Transit Study

This study covers the TriCounty area: Berkeley, Charleston, and Dorchester Counties.

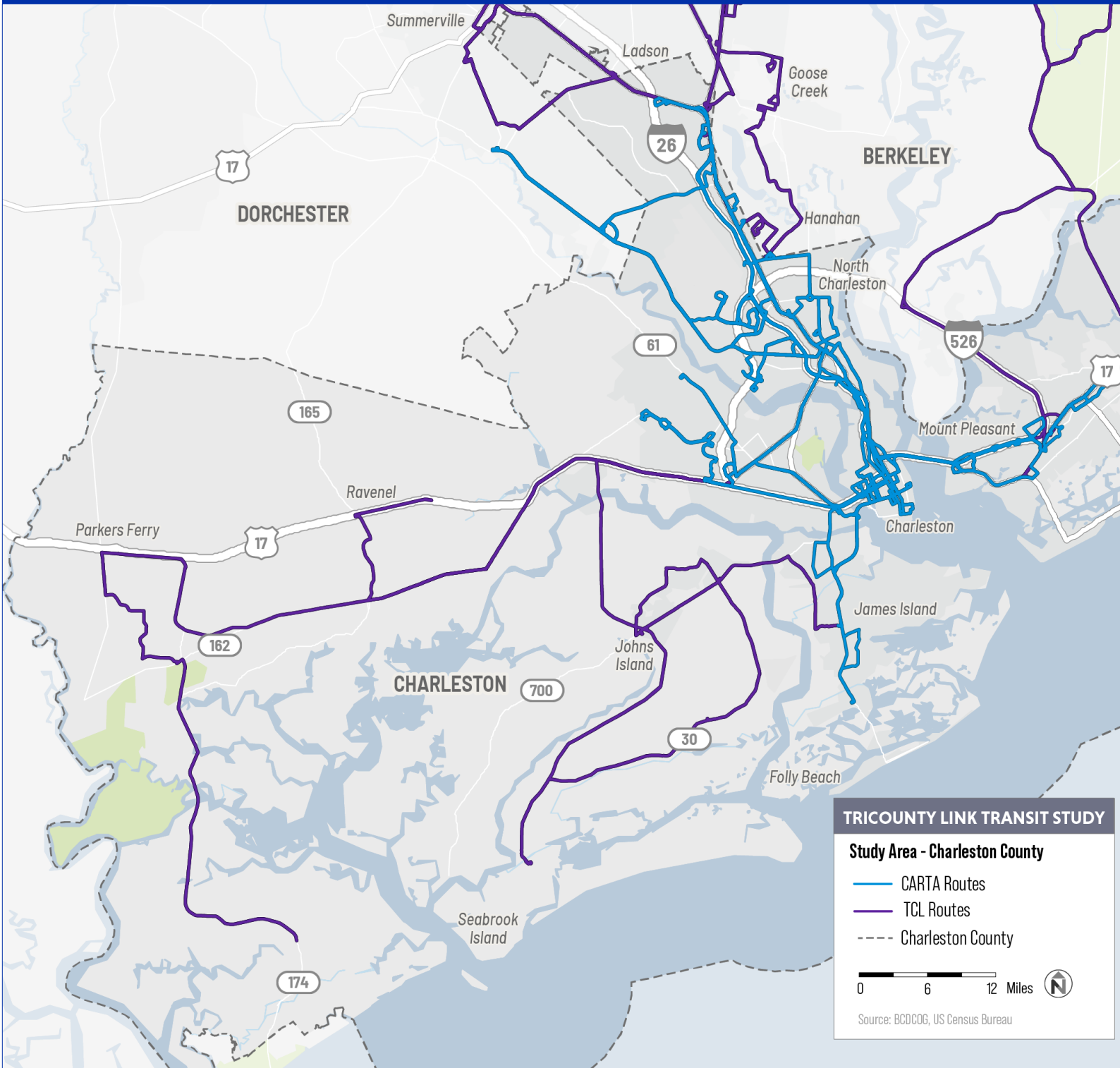
- BERKELEY COUNTY
- CHARLESTON COUNTY
- DORCHESTER COUNTY
- SUMMERVILLE



TriCounty Link Transit Study

This study covers the TriCounty area: Berkeley, Charleston, and Dorchester Counties.

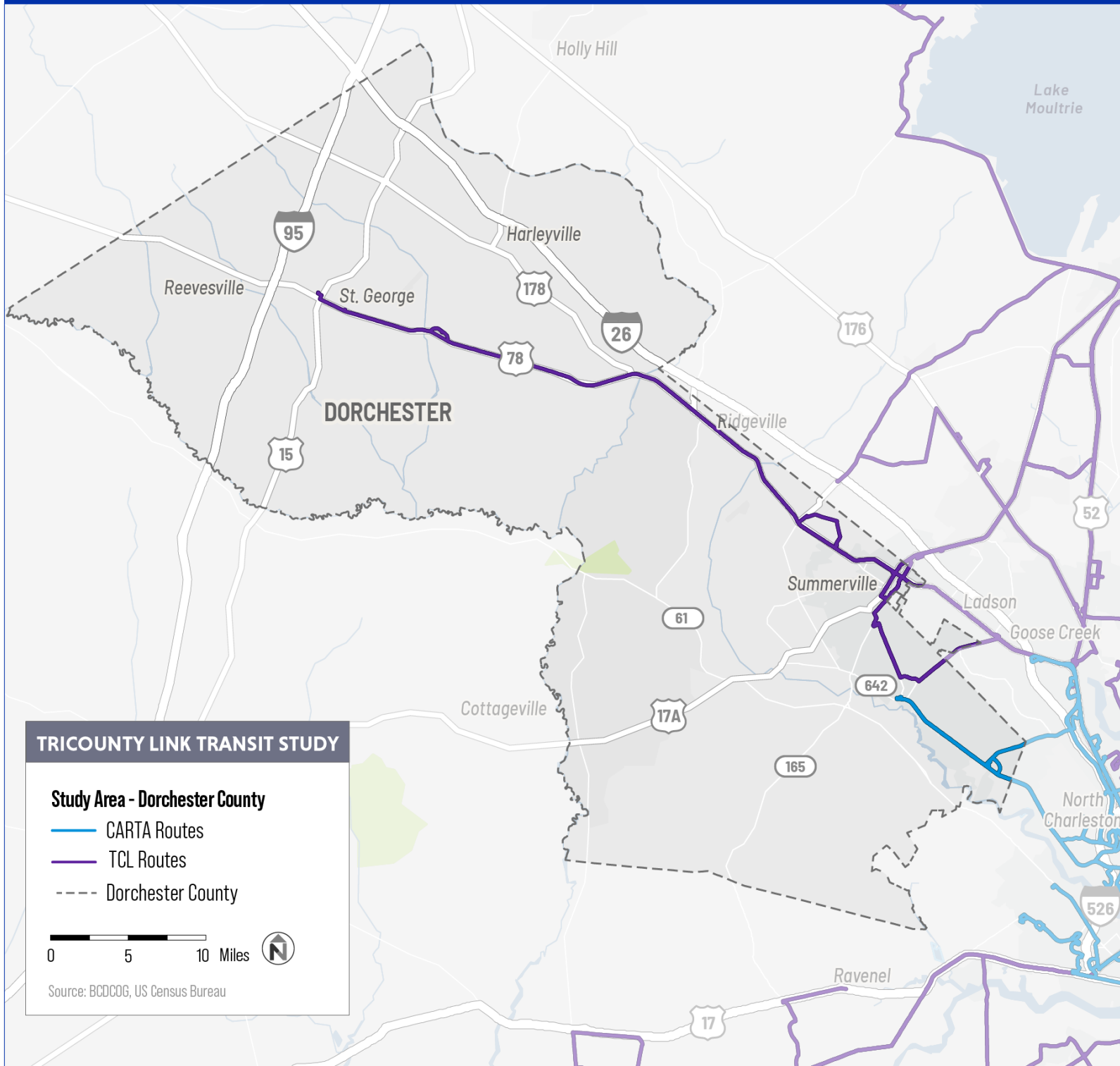
- BERKELEY COUNTY
- CHARLESTON COUNTY
- DORCHESTER COUNTY
- SUMMERVILLE



TriCounty Link Transit Study

This study covers the TriCounty area: Berkeley, Charleston, and Dorchester Counties.

BERKELEY COUNTY	CHARLESTON COUNTY	DORCHESTER COUNTY	SUMMERVILLE
-----------------	-------------------	--------------------------	-------------



TriCounty Link Transit Study

This study covers the TriCounty area: Berkeley, Charleston, and Dorchester Counties.

BERKELEY COUNTY	CHARLESTON COUNTY	DORCHESTER COUNTY	SUMMERVILLE
-----------------	-------------------	-------------------	--------------------

TRICOUNTY LINK TRANSIT STUDY

Study Area - Summerville

- CARTA Routes
- TCL Routes
- Summerville



Source: BGD006, US Census Bureau

