

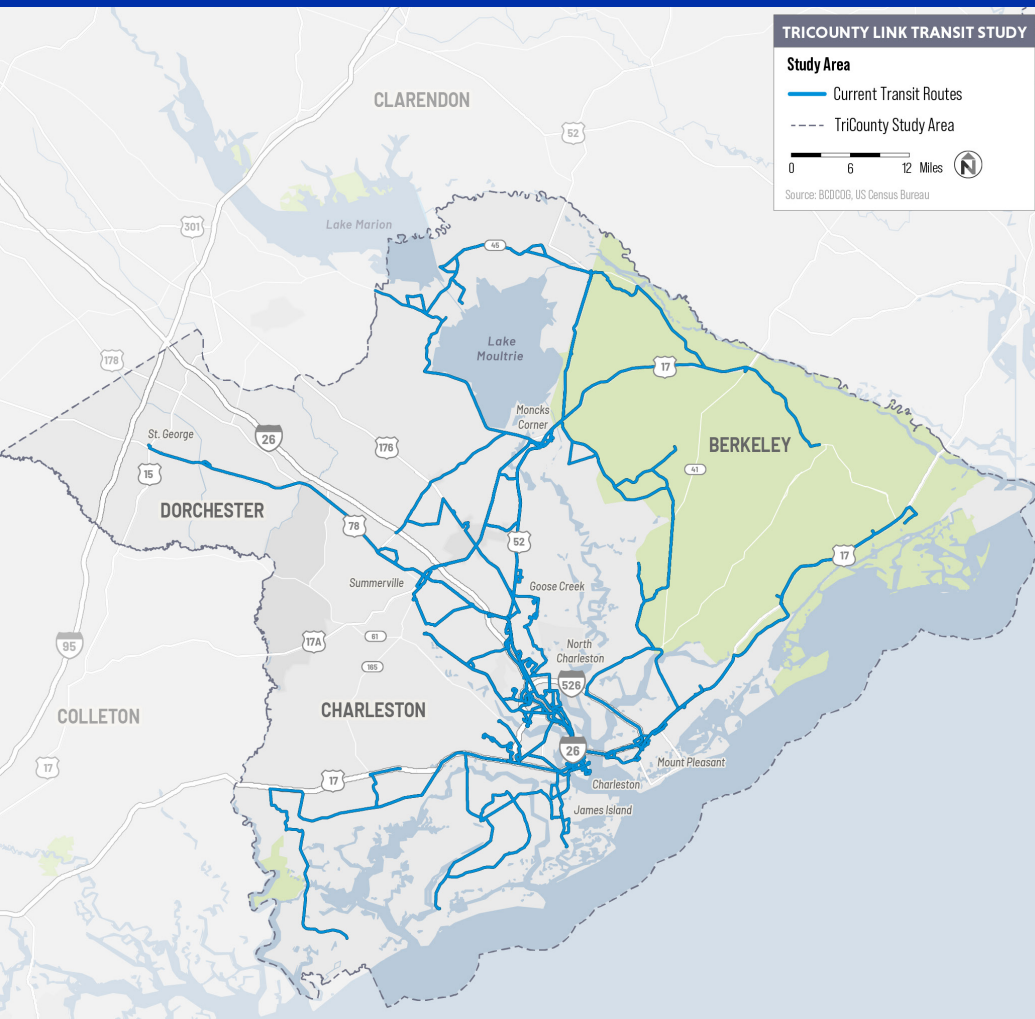
TriCounty Link Transit Study

The TriCounty Link (TCL) transit system provides fixed, commuter, and on-demand transit services to the rural residents of Berkeley, Charleston, and Dorchester counties. TCL is developing a transit study to plan for more efficient, effective, and convenient service for the entire TriCounty Link area, including specific recommendations for the fast-growing Summerville area.



Study Goals

- 1 Connect underserved communities to key job centers and existing and planned transit
- 2 Develop a framework for reliable and efficient, fixed route and on-demand service
- 3 Integrate current and planned transit services in key communities (e.g. Summerville)
- 4 Get community input, especially from riders who rely on transit most



Phase 1 Existing Conditions



Understand current transit use, service gaps, and the improvements desired by the community.

Phase 2 Recommendations



Create recommendations for addressing transit needs and present draft concepts to the community.

Phase 3 Final Plan



Compile data analysis, community engagement findings, implementation planning, and funding opportunities into a final plan.



Contact us at info@ridetricountylink.com