



WELCOME TO
TRICOUNTY LINK
TRANSIT ADVERTISING!



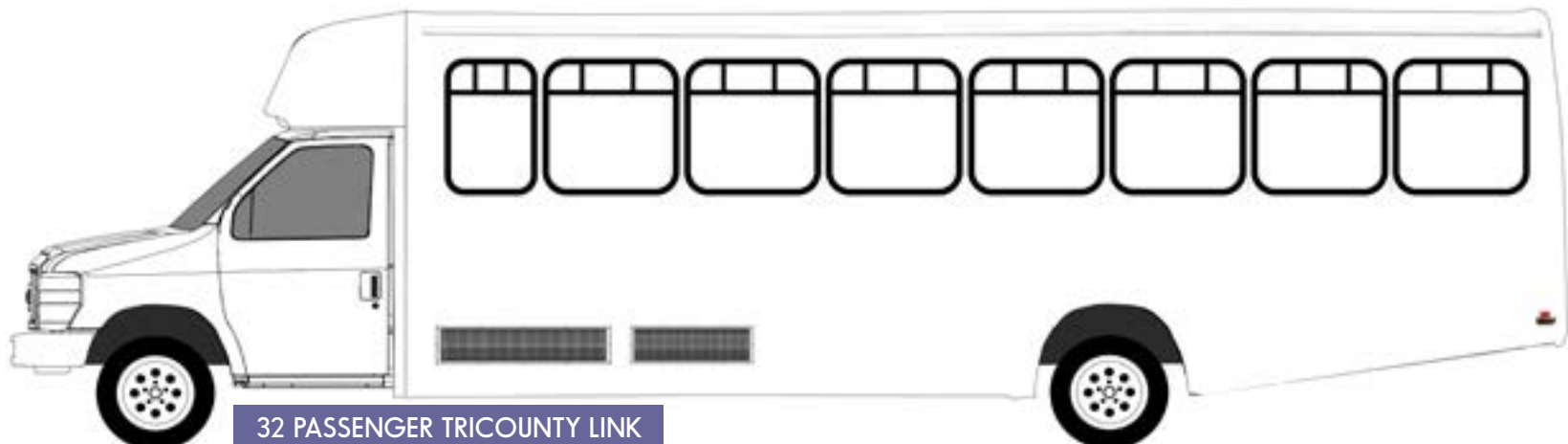
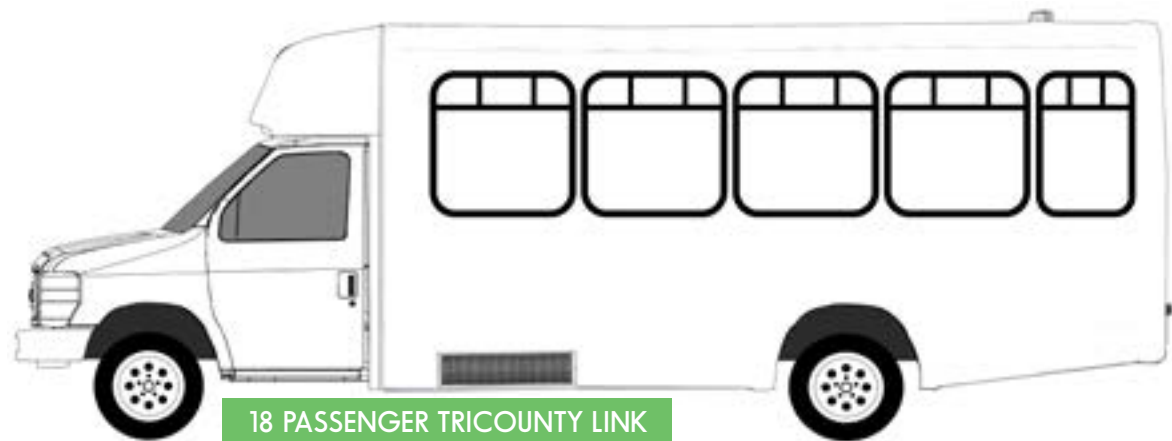
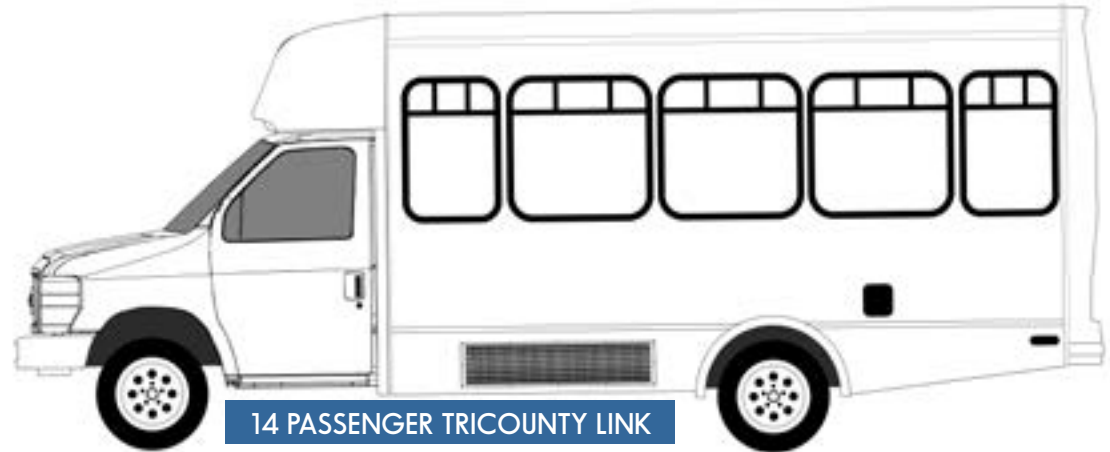
WELCOME TO TRICOUNTY LINK TRANSIT ADVERTISING!

Our buses traverse the roadways of the tremendous growth areas of Berkeley and Dorchester counties.

TriCounty Link compliments CARTA with its connecting rural routes in Summerville, Moncks Corner and Goose Creek to name a few of the towns we cover.

Dorchester and Berkeley counties both rank in the top ten fastest growing counties in South Carolina, with a combined 2019 population of 373,000.

If your potential clients drive, we can absolutely deliver your message to them with an impactful and cost effective campaign.



WELCOME TO
TRICOUNTY LINK
TRANSIT ADVERTISING!

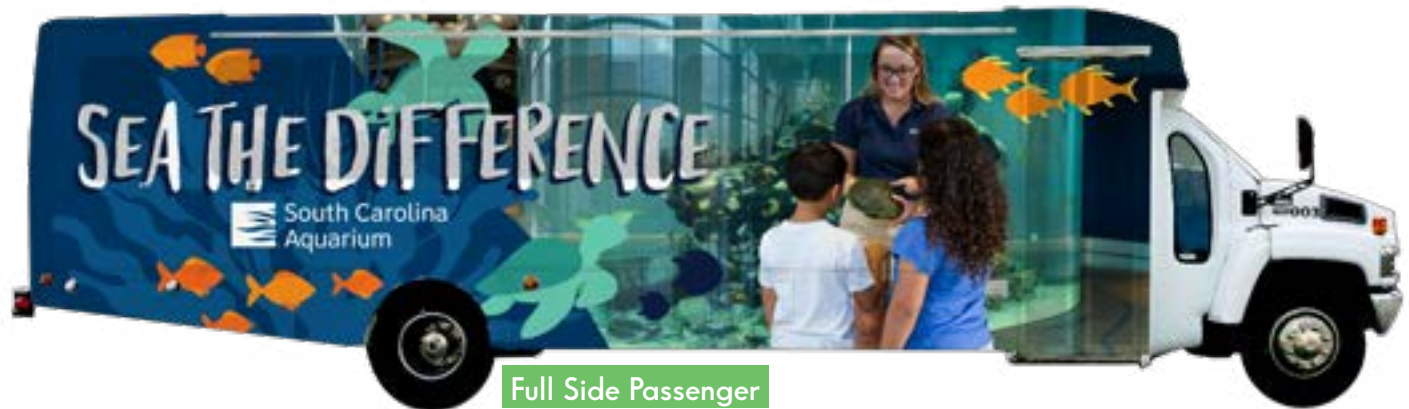
32 PASSENGER TRICOUNTY LINK



Full Wrap Option Available
Includes Full Side Driver,
Full Side Passenger and Full Back



Super King



Full Side Passenger



Full Back



Full Side Driver

WELCOME TO
TRICOUNTY LINK
TRANSIT ADVERTISING!

22' 16 PASSENGER TRICOUNTY LINK



Full Wrap Option Available
Includes Full Side Driver,
Full Side Passenger and Full Back



Super King



Full Side Passenger



Full Back



Full Driver

WELCOME TO
TRICOUNTY LINK
TRANSIT ADVERTISING!

22' 14 PASSENGER TRICOUNTY LINK



Full Wrap Option Available
Includes Full Side Driver,
Full Side Passenger and Full Back



Super King



Full Side Passenger



Full Back



Full Side Driver

WELCOME TO TRICOUNTY LINK TRANSIT ADVERTISING!

ROUTE MAP



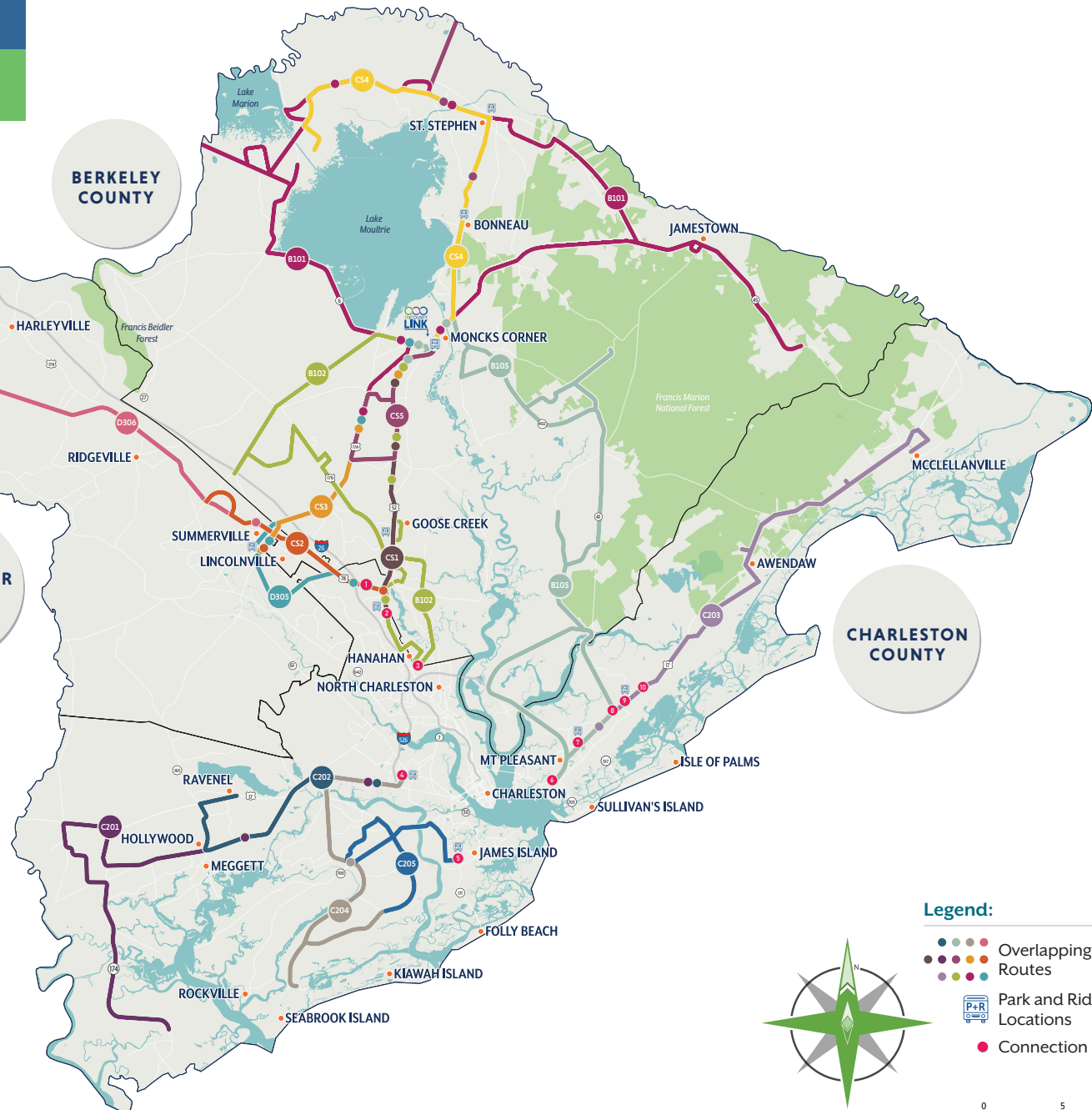
BERKELEY COUNTY

DORCHESTER COUNTY

CHARLESTON COUNTY

CARTA and TriCounty Link Connections

- 1: Medcom St / Trident Medical Center
- 2: Rivers Ave Park and Ride
- 3: Yeamans Hall Rd / Yeamans Hall Plaza
- 4: Citadel Mall
- 5: James Island Walmart (Park & Ride)
- 6: Coleman Blvd / Sea Island Shopping Center
- 7: Wando Crossing Walmart (Park & Ride)
- 8: Hwy 17 / Hwy 41
- 9: Walmart : Market At Oakland (Park & Ride)
- 10: Carolina Park Blvd / Hwy 17



Legend:

- Overlapping Routes
- Park and Ride Locations
- Connection Points



0 5 10 Miles

WELCOME TO
TRICOUNTY LINK
TRANSIT ADVERTISING!

2021 ADVERTISING RATES BY MONTH



| Size | Quantity | 12 Month Rate | 6 Month Rate | Production Per Unit |
|----------------|----------|---------------|--------------|---------------------|
| 22' Full Wrap | 3 | 3000 | 3300 | \$4500 |
| | 1 | 1200 | 1300 | |
| 22' Full Side | 5 | 3000 | 3400 | \$1500 |
| | 3 | 1700 | 2100 | |
| | 1 | 650 | 700 | |
| 22' Full Back | 5 | 2400 | 2500 | \$750 |
| | 3 | 1500 | 1600 | |
| 22' Super King | 5 | 2000 | 2200 | \$700 |
| | 3 | 1300 | 1400 | |

Production on 32 passenger buses to be quoted separately

FOR MORE INFORMATION CONTACT

Jon Kane | Advertising Sales Manager
Berkeley-Charleston-Dorchester Council of Governments

5790 Casper Padgett Way | N. Charleston, SC 29406

C: 843-364-2627 | O: 843-529-0400

Jkane@bcdcog.com

www.ridetricountylink.com/advertise